

GNL3 Antibody (N-term)
Purified Rabbit Polyclonal Antibody (Pab)
Catalog # AP21197a**Specification**

GNL3 Antibody (N-term) - Product Information

Application	WB, IF, E
Primary Accession	Q9BVP2
Reactivity	Human
Host	Rabbit
Clonality	polyclonal
Isotype	Rabbit IgG
Calculated MW	61993

GNL3 Antibody (N-term) - Additional Information**Gene ID** 26354**Other Names**

Guanine nucleotide-binding protein-like 3, E2-induced gene 3 protein, Novel nucleolar protein 47, NNP47, Nucleolar GTP-binding protein 3, Nucleostemin, GNL3, E2IG3, NS

Target/Specificity

This GNL3 antibody is generated from a rabbit immunized with a KLH conjugated synthetic peptide between 91-124 amino acids from the N-terminal region of human GNL3.

Dilution

WB~~1:2000

IF~~1:25

E~~Use at an assay dependent concentration.

Format

Purified polyclonal antibody supplied in PBS with 0.09% (W/V) sodium azide. This antibody is purified through a protein A column, followed by peptide affinity purification.

Storage

Maintain refrigerated at 2-8°C for up to 2 weeks. For long term storage store at -20°C in small aliquots to prevent freeze-thaw cycles.

Precautions

GNL3 Antibody (N-term) is for research use only and not for use in diagnostic or therapeutic procedures.

GNL3 Antibody (N-term) - Protein Information**Name** GNL3**Synonyms** E2IG3, NS

Function May be required to maintain the proliferative capacity of stem cells. Stabilizes MDM2 by preventing its ubiquitination, and hence proteasomal degradation (By similarity).

Cellular Location

Nucleus {ECO:0000250|UniProtKB:Q811S9}. Nucleus, nucleolus. Note=Shuttles between the nucleus and nucleolus. {ECO:0000250|UniProtKB:Q811S9}

Tissue Location

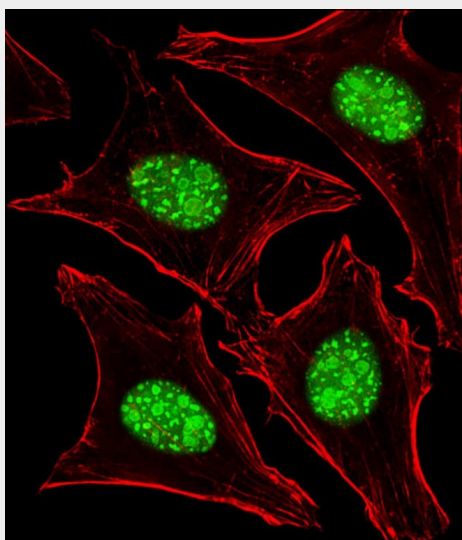
Increased levels in lung tissue in cancer patients.

GNL3 Antibody (N-term) - Protocols

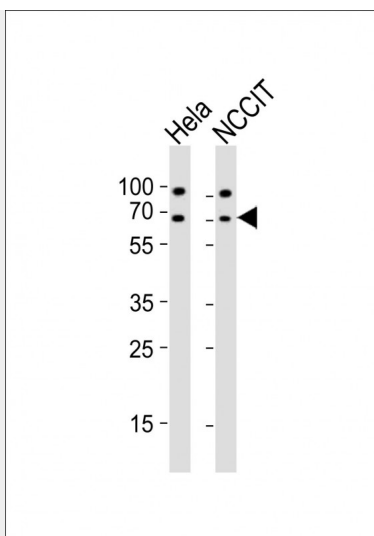
Provided below are standard protocols that you may find useful for product applications.

- [Western Blot](#)
- [Blocking Peptides](#)
- [Dot Blot](#)
- [Immunohistochemistry](#)
- [Immunofluorescence](#)
- [Immunoprecipitation](#)
- [Flow Cytometry](#)
- [Cell Culture](#)

GNL3 Antibody (N-term) - Images



Immunofluorescent analysis of 4% paraformaldehyde-fixed, 0.1% Triton X-100 permeabilized Hela (Human cervical epithelial adenocarcinoma cell line) cells labeling GNL3 with AP21197a at 1/25 dilution, followed by Alexa Fluor 488-conjugated goat anti-rabbit IgG (1583138) secondary antibody at 1/400 dilution (green). Confocal image showing both nuclear staining on Hela cell line. Cytoplasmic actin is detected with Alexa Fluor® 555 conjugated with Phalloidin (OB16636430) at 1/100 dilution (red).



All lanes : Anti-GNL3 Antibody (N-term) at 1:2000 dilution Lane 1: HeLa whole cell lysates Lane 2: NCCIT whole cell lysates Lysates/proteins at 20 µg per lane. Secondary Goat Anti-Rabbit IgG, (H+L), Peroxidase conjugated at 1/10000 dilution Predicted band size : 62 kDa Blocking/Dilution buffer: 5% NFDM/TBST.

GNL3 Antibody (N-term) - Background

May be required to maintain the proliferative capacity of stem cells. Stabilizes MDM2 by preventing its ubiquitination, and hence proteasomal degradation (By similarity).

GNL3 Antibody (N-term) - References

Charpentier A.H.,et al.Cancer Res. 60:5977-5983(2000).
Han C.,et al.Int. J. Mol. Med. 16:205-213(2005).
Ota T.,et al.Nat. Genet. 36:40-45(2004).
Muzny D.M.,et al.Nature 440:1194-1198(2006).
Andersen J.S.,et al.Curr. Biol. 12:1-11(2002).